

WHERE COULD I WORK?

If you're a qualified health or social care professional, we've got jobs for you at all levels, from nursing staff to salaried GPs, therapists to social workers.

Here in Kent we believe in working together to achieve our aims. That means making sure we integrate across all of our health and social care providers to achieve the best possible outcomes for our communities. We offer rotational posts across trusts and a great return to practice scheme.

We are working together to develop a proposal to build a brand new medical school to train and recruit the next generation of clinical staff for this area, subject to usual processes.

Looking to specialise? No problem, we have lots of opportunities for you to do just that, either in our acute hospitals, or in the community for some of the best-rated public sector organisations in the country.




KENT? WHERE'S THAT?

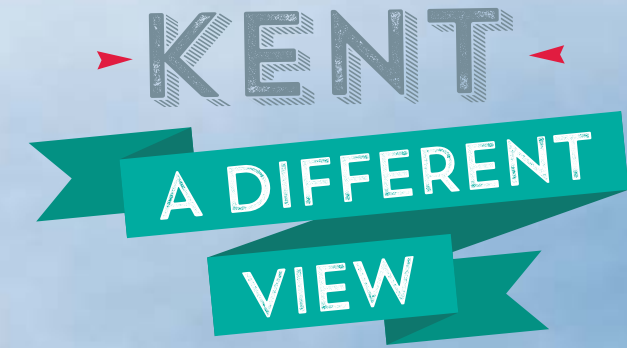
Take a different view of this unique part of the country. With miles of incredible coastline, rolling countryside, lively seaside towns, diverse communities and easy access to London and Europe, this could be the place to develop your career.



 www.takeadifferentview.co.uk

 [Facebook.com/adifferentviewKENT](https://www.facebook.com/adifferentviewKENT)

 [Twitter @KentDiffView](https://twitter.com/KentDiffView)



IF YOU'RE A QUALIFIED
HEALTH AND SOCIAL
CARE PROFESSIONAL,
WE NEED YOU
IN KENT



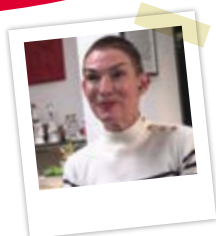
WE DID IT!

SONJA

Clinical Lead, Kent Community Health NHS Foundation Trust

Ten years after deciding on a move from Greenwich to Kent, Sonja and husband Jules are convinced they made the right decision:

“ I had brilliant friends and a great job in London and I didn't expect to find that again but it has been fantastic, I have found great people here and a career just as good as the one I had before. There's a great team of highly skilled clinicians here who are passionate about their jobs. It's a family friendly Trust to work for and there is lots of flexibility and variety. I would never go back. It's been transforming. ”



MO

GP

Mo is a partner at the Bethesda Medical Practice in Cliftonville, Margate – a popular practice serving a culturally-mixed area and situated right on the seafront. He lives with his family by the sea in nearby Broadstairs.

“ It was a treat moving to Thanet as I am not a great fan of traffic congestion! ”



“ I was living in Dagenham in east London, so you can well imagine doing a mile in 45 minutes was not my cup of tea. East Kent on the other hand provided me with a totally different perspective. We have loved every minute. There's no other place you can work and make a difference for your patients, while at the same time feel like you're on holiday every day. ”

DAVID

A love of art, culture and entertainment attracted 34-year-old dietitian David Lee to move to Kent in 2017.

Originally from Singapore, David chose to relocate to Gillingham in Kent in September last year – choosing Medway Community Health as the right place to develop his career.

“ I trained in Edinburgh, and had my placement in Glasgow. I had friends in London and the south, so I began looking for vacancies in London and nearby. Gillingham is an ideal location for me as it's not as expensive to live in as London but has all of the benefits, as it's just 50 minutes on the fast train to St Pancras. ”



SUSAN

Practice Development Lead for Kent County Council

Susan Ashmore made the move to east Kent when her daughter was at primary school.

“ I was born and bred in east London but I studied in Canterbury and I knew it was a special place to live. When my daughter reached school age I decided to make the move back to Kent to raise my family. ”



“ I started off as a main grade social worker – the great thing about Kent County Council is that it's a large organisation, so there's lots of scope to move around and develop your career. Progression is really easy. ”

“ I think coming to Canterbury to live has given me a sense of community that you just don't get in London. It's like living in a village. ”

YVETTE

Clinical Psychologist, Kent and Medway NHS and Social Care Partnership Trust

Yvette arrived in east Kent in November 2014 after becoming fed up with a dirty, built up environment in London.

“ We have bought a beautiful Regency house in Ramsgate that there is no way we could have afforded in London. We have a sea view and, at the end of the road, a blue flag beach. We enjoy being able to walk around the Royal Harbour and along the beach to Broadstairs. ”

“ We've both taken up running which we couldn't really do in London without stopping every five minutes to cross busy roads. And everyone is really friendly here, in London people often don't have time to talk with you or give you good service. It's been a big success. ”



DEAL BEACH